

# Legacy Bluetooth Setup

Windows XP – Windows 8.1

vmedtechnology

<https://www.vmedtechnology.com>

800-926-9622

# Table of Contents

1	Introduction .....	3
2	Bluetooth Setup.....	4
2.1	Windows XP (SP2 or SP3).....	4
2.2	Windows Vista and Windows 7 .....	8
2.3	Windows 8.1.....	12
3	Configuring PC-Display for Internal Bluetooth.....	15

# 1 Introduction

As the Microsoft Windows™ operating system has changed through the years from Windows XP to the present Windows 10, there have been several changes to how the installation, pairing and configuration of Bluetooth is performed. This is especially true with regard to how Vmed wireless monitors should be connected to that Windows computer.

Although Windows 10 is now the predominantly used version of Windows, you may still have an older version of Windows installed in your practice. For that reason, the following document describes the steps necessary to manage the installation and setup of Bluetooth as well as the pairing and configuration of Vmed wireless monitors with the Windows XP (SP2 or SP2), Windows Vista, Windows 7 and Windows 8.1 operating systems.

For instructions of how to install and pair your Vmed wireless remote using Windows 10, refer to the PC-Display User Manual:

[https://www.vmedtechnology.com/customers/pdf/PC-Display\\_Manual.pdf](https://www.vmedtechnology.com/customers/pdf/PC-Display_Manual.pdf)

While Vmed does not recommend use of its monitors on versions of Windows older than Service Pack 2 of Windows XP, you may find instructions for how to install and configure Bluetooth on even earlier versions of Windows here:

[https://www.vmedtechnology.com/cust/pdf/Non-SP2\\_Bluetooth\\_Install\\_Manual.pdf](https://www.vmedtechnology.com/cust/pdf/Non-SP2_Bluetooth_Install_Manual.pdf)

## 2 Bluetooth Setup

### 2.1 Windows XP (SP2 or SP3)

Microsoft developed its own Bluetooth drivers in Service Pack 2 of Windows XP. Follow the instructions below which describe the process of installing Bluetooth and pairing a Vmed wireless remote in Windows XP Service Pack 2 or Service Pack 3. These instructions assume that your computer does not have internal Bluetooth installed.

1. Plug the Bluetooth USB adaptor (dongle) into a USB port on your computer.



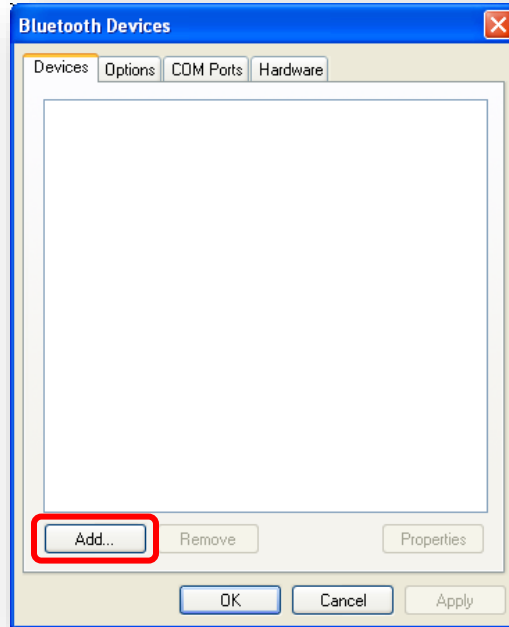
2. Windows should automatically detect the device and respond with an audio prompt. A note confirming detection of the device should appear in the lower right-hand corner of the display.



3. Once Windows has finished establishing the Bluetooth drivers for this adaptor double click the "Bluetooth Devices" icon on your desktop or select "Bluetooth Devices" from the "Control Panel" through the "Start" menu.



4. After the following “Bluetooth Devices” window appears, click on the button marked “Add”.



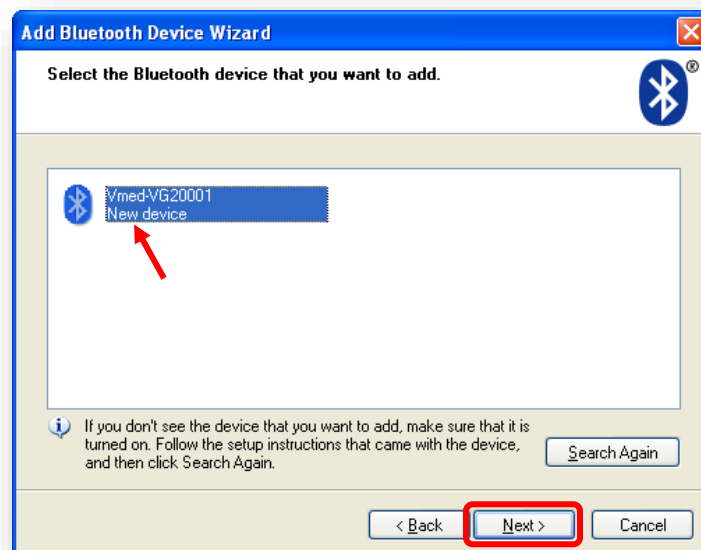
5. Turn on your Vmed wireless remote by depressing the red button at the top left of the remote module's keypad.



6. Wait for the “CONNECTION” or “STATUS” light on the wireless remote to turn amber and then put a check mark in the box next to “My device is set up and ready to be found.” on the Add Bluetooth Device Wizard window shown below.



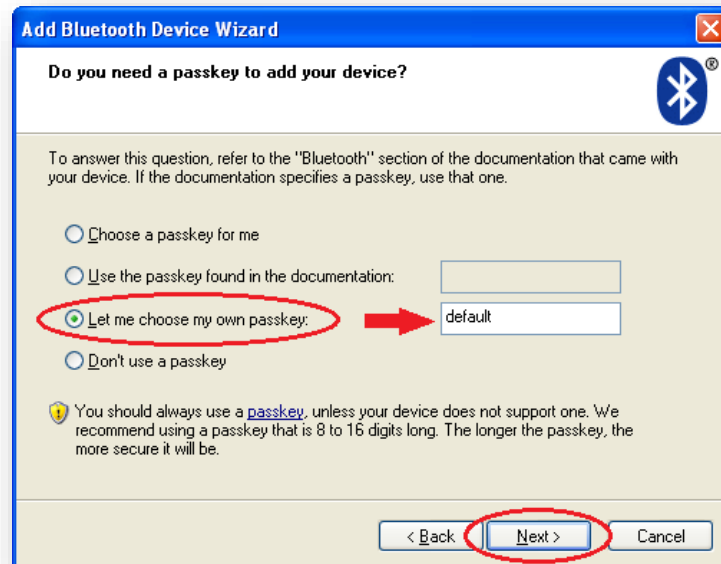
7. Click “Next” and your computer will search for the wireless remote. When the Vmed remote is found, a window like the one below will appear. The ID number following “Vmed-” will be the same as the ID number that is printed on the back label of the Vmed wireless remote.



**NOTE:**

The two letters shown after “Vmed-” will correspond to the model of Vmed wireless remote (i.e. “ET” = PC-Vet, “EG” = PC-VetGard, “VG” = PC-VetGard+, “VC” = PC-VetChek and “AG” = BP-AccuGard). This example uses a VetGard+.

8. Highlight the identified Vmed wireless remote and click “Next”, which will open the following window. Select “Let me choose my own passkey:” and enter “default” into the text area beside it (this passkey is case-sensitive).



9. Select the “Let me choose my own passkey” option and enter the passkey of “default” in the text entry box beside it. Then, click “Next”. When the window below opens, click “Finish”.



**NOTE:**

There should be two COM (communications) ports listed on the screen above. They may be different for different discoveries and you should not have to remember them, but you should verify that there are two listed.

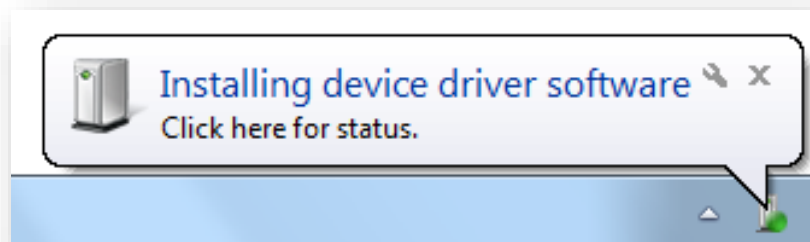
## 2.2 Windows Vista and Windows 7

While the methods of Bluetooth setup in Windows Vista prior to Service Pack 2 are very similar to that of Windows XP, Windows Vista (Service Pack 2) and Windows 7 have somewhat different dialog windows. The following section assumes that your computer does not have internal Bluetooth. However, if it does then skip to step 3.

1. Plug the Bluetooth USB Adaptor (dongle) into an available USB port of your computer.



2. Windows should automatically detect the device and respond with an audio prompt. A note confirming detection of the device should appear in the lower right-hand corner of the display.





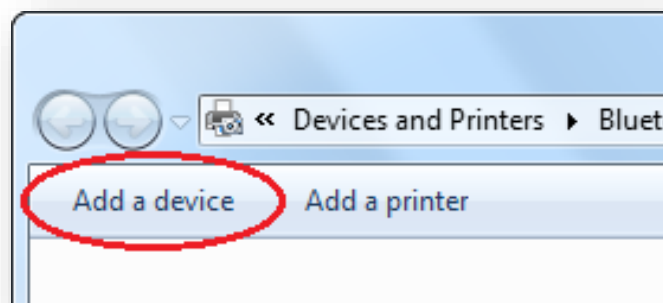
3. Once Windows has finished establishing the Bluetooth drivers for this adaptor double-click the “Bluetooth Devices” icon in the bottom right portion of your desktop or select “Bluetooth Devices” from the “Control Panel” through the “Start” menu (or select “Devices and Printers” from the “Start” menu if you are using Windows 7).



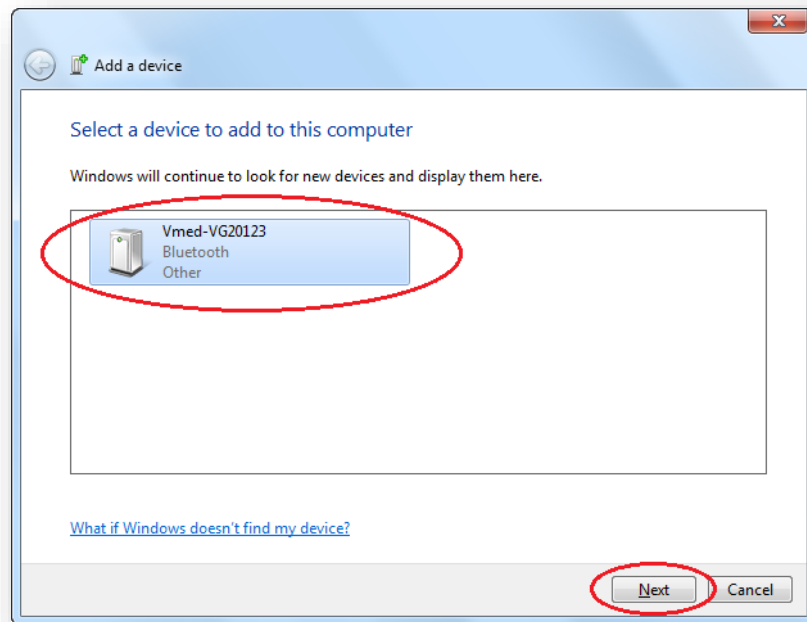
4. Turn on your Vmed wireless remote by depressing the red button at the top left of the remote module's keypad.



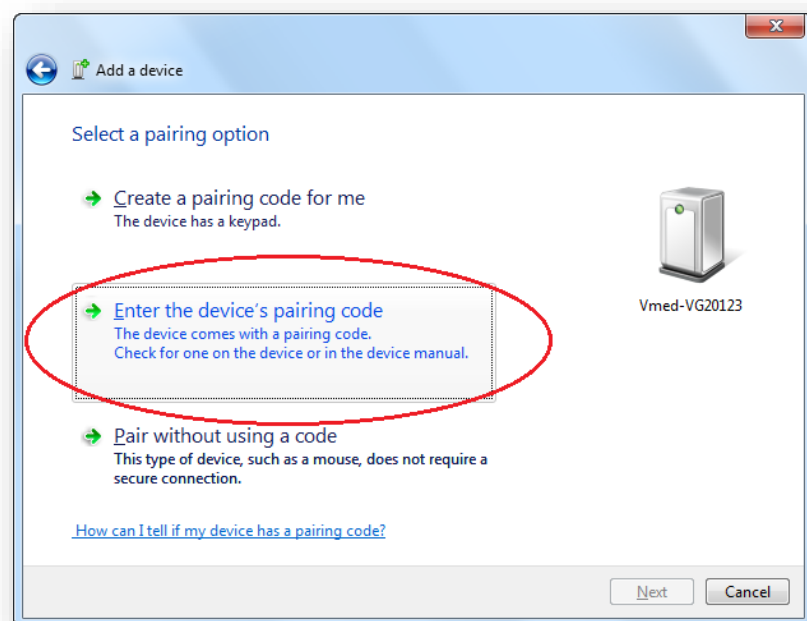
5. In the resulting devices window click the button marked “Add a device”.



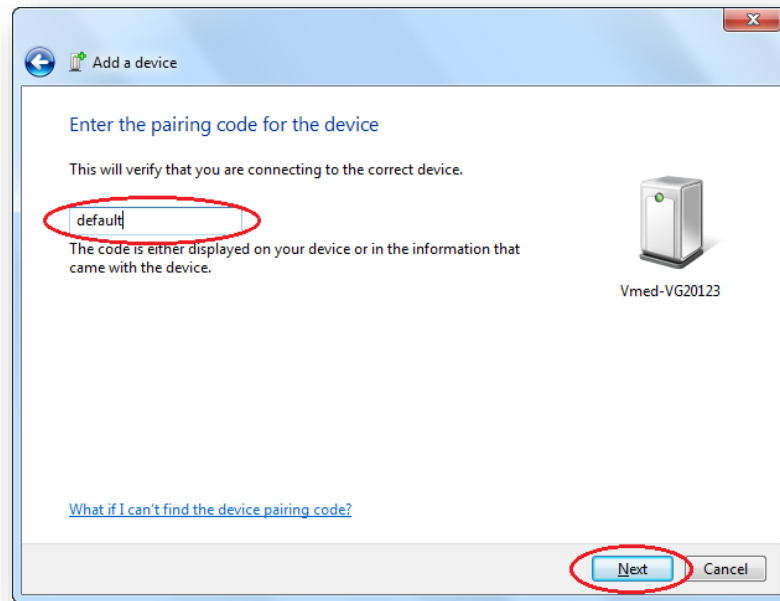
6. The devices window will display new devices as they are found. Select your Vmed remote device (in this example it is a PC-VetGard+ with the ID: VG20123). Once selected, click the Next button.



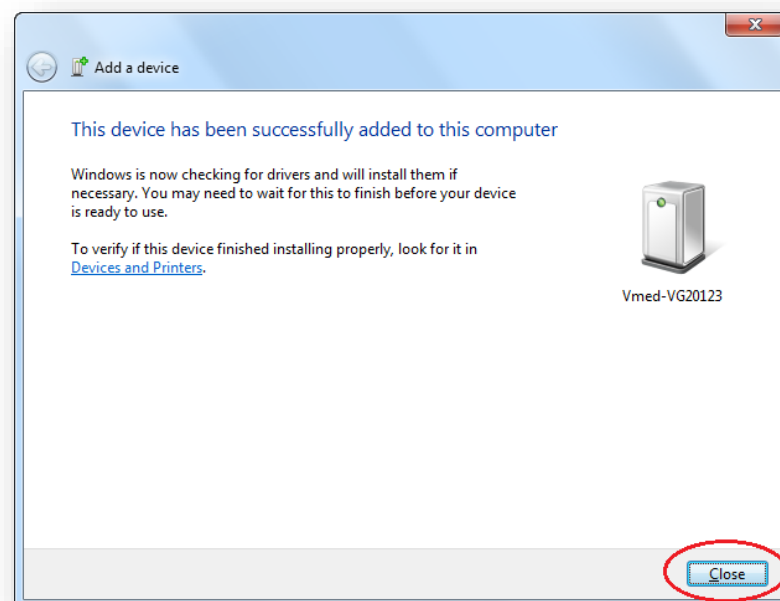
7. On the following screen, choose the middle option, "Enter the device's pairing code".



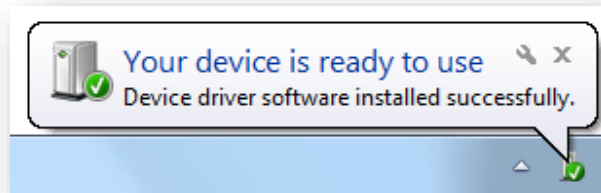
8. Then, enter the following pairing code: “default” (this is case-sensitive). Then click “Next” to proceed.



9. This will begin the pairing of your Bluetooth device. Once the pairing process is complete then you will see a “Close” button. At this point, you may press this button to finish the pairing process.



10. You may also see a notification bubble verifying that the pairing process is complete.



## 2.3 Windows 8.1

The following Bluetooth setup instructions for Windows 8.1 assume that your computer does not have internal Bluetooth. However, if it does then skip to step 3.

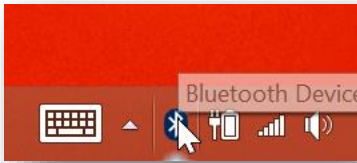
1. Plug the Bluetooth USB Adaptor (dongle) into an available USB port of your computer.



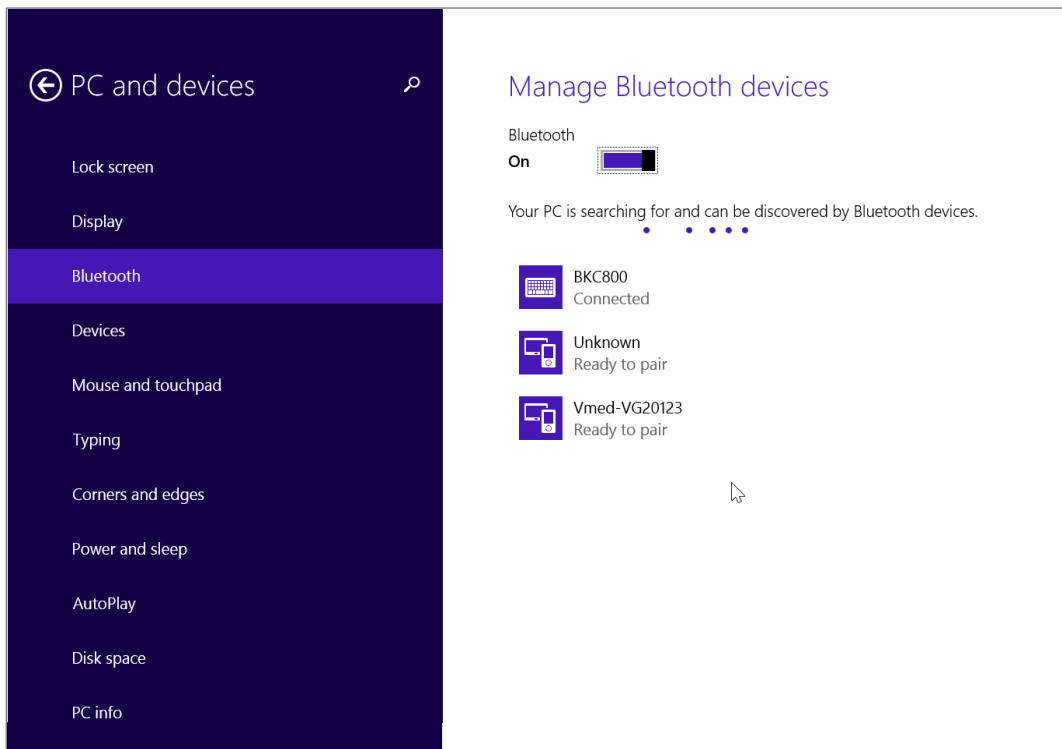
2. Windows should automatically detect the device and respond with an audio prompt. A note confirming detection of the device should appear in the lower right-hand corner of the display.
3. Turn on your Vmed wireless remote by depressing the red button at the top left of the remote module's keypad.



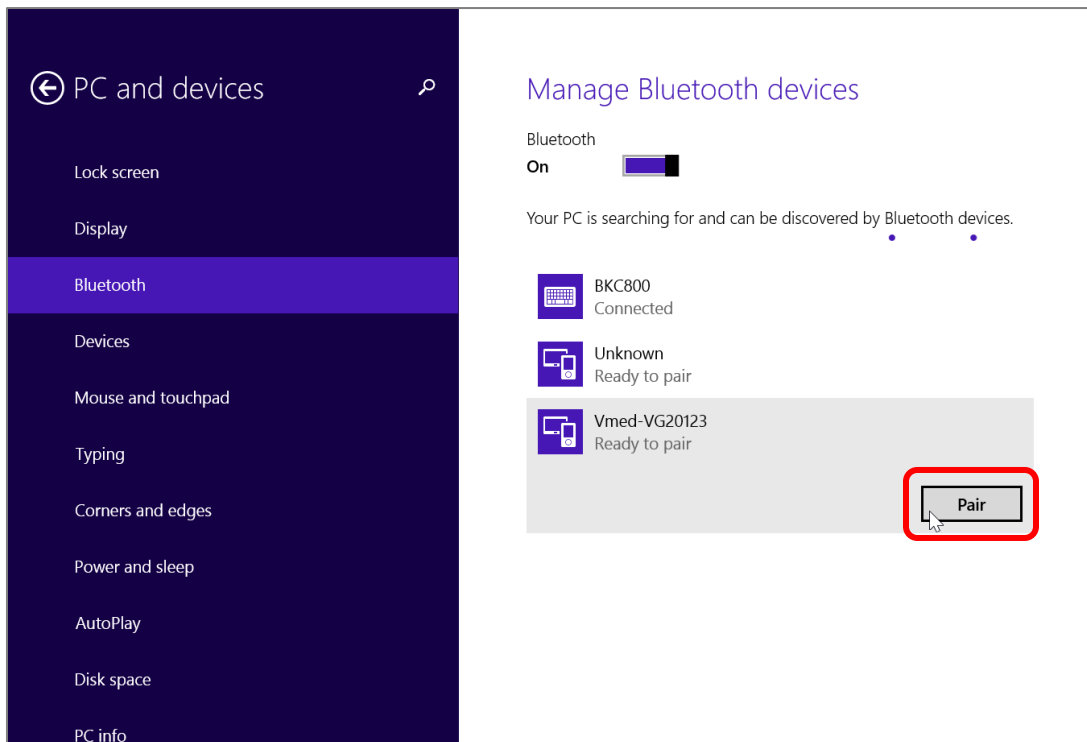
4. Double-click the “Bluetooth Devices” icon in the bottom right portion of your desktop.



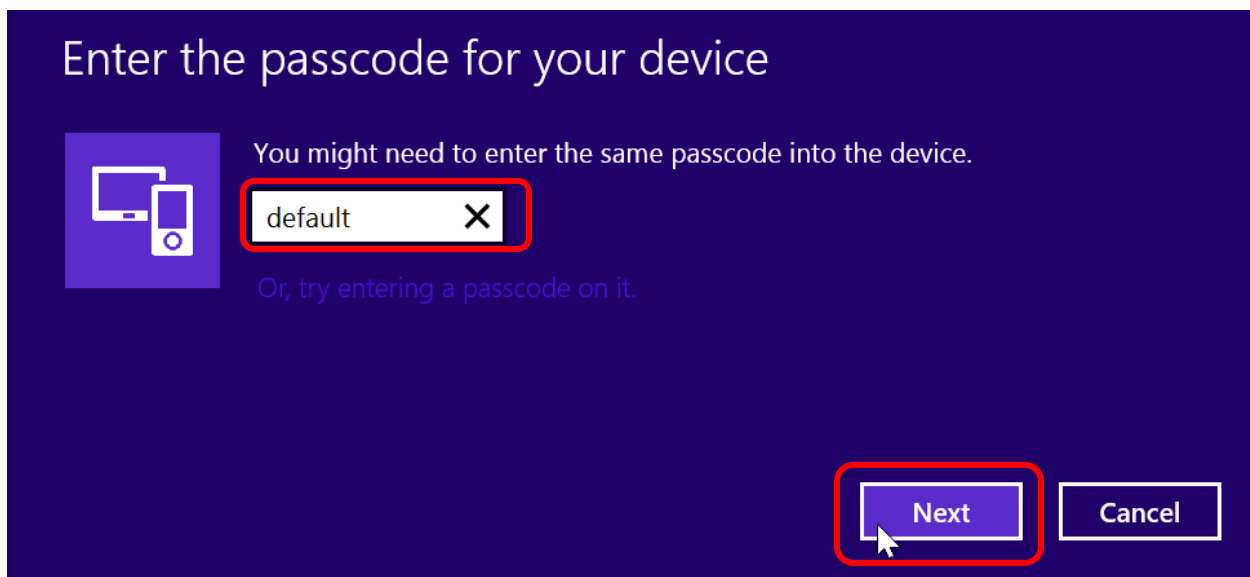
5. The Windows 8 Settings app should open to the “Manage Bluetooth devices” screen. It will automatically begin searching for available Bluetooth devices. Wait until your wireless remote appears in this list (its name will start with “Vmed-”; in this case, it is “Vmed-VG20123”).



6. Select your Vmed remote. Then, click the “Pair” button.



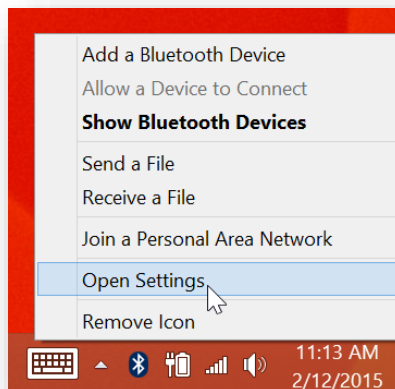
7. When asked for a passcode, enter the word “default” (this is case-sensitive). Then, click “Next” to complete the pairing process.



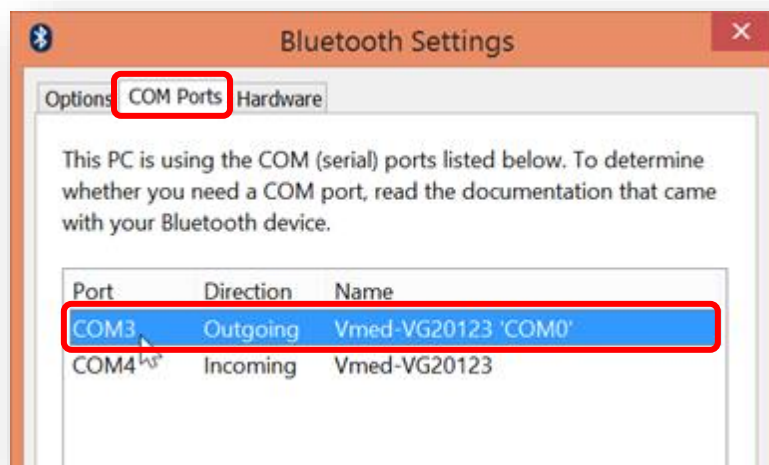
### 3 Configuring PC-Display for Internal Bluetooth

When a computer has internal Bluetooth installed then PC-Display may need a bit more setup to be able to connect to your wireless remote after you have paired it. If that is the case for your computer then follow the below steps.

1. Right-click the Bluetooth Devices icon in your System Tray at the bottom right of the screen and then choose “Open Settings”.



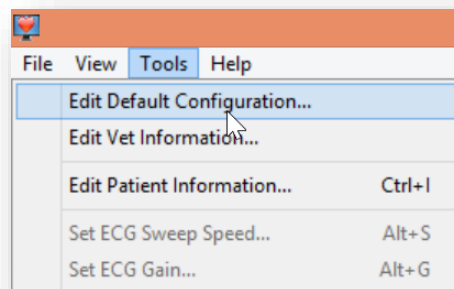
2. Click the “COM Ports” tab of the Bluetooth Settings window and locate the line that lists your Vmed wireless remote under the “Name” column and the word “Outgoing” under the “Direction” column. Note the number shown on this line next to “COM” under the “Port” column. In this example it is “COM3”.



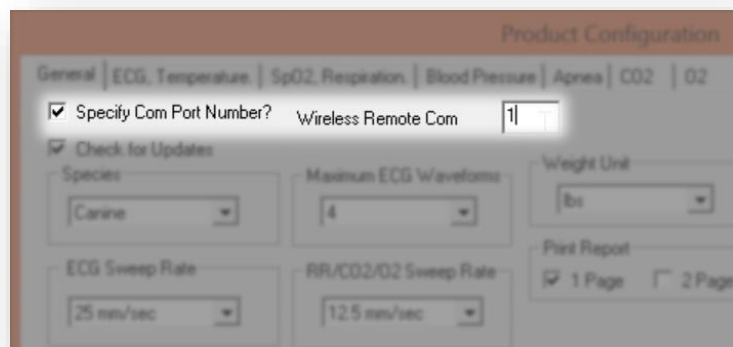
3. Double-click the PC-Display icon from the Desktop to open PC-Display. It should show the following error message. Click “Cancel”.



4. Choose “Edit Default Configuration” from the Tools menu of PC-Display.

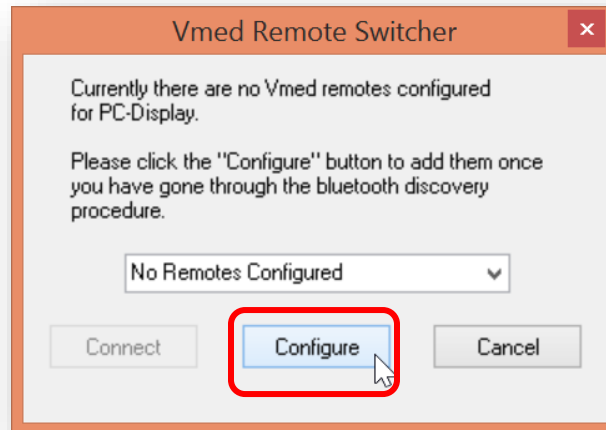


5. In the upper left corner of the Product Configuration window put a check mark in the box next to “Specify Com Port Number?”. Then, in the text box to the right of “Wireless Remote Com” enter a non-zero number.





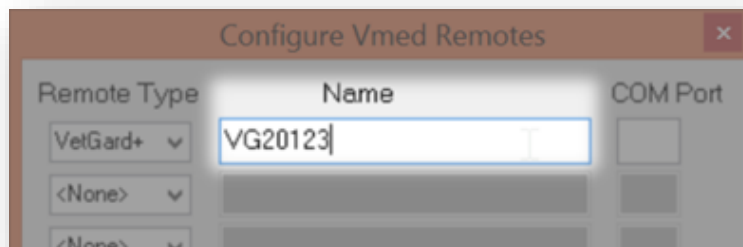
6. Then, click the OK button and close PC-Display.
7. Now, open PC-Display once more and when you see the “Vmed Remote Switcher” window click the “Configure” button.



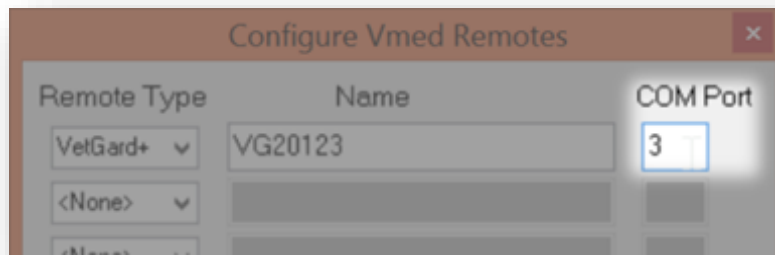
8. In the Configure Vmed Remotes window first select the remote type at the top left that corresponds to your Vmed wireless remote.



9. Then, enter a name that will help you to later identify this remote such as its ID number.



10. Finally, in the box at the right enter the COM port number that you noted in step 2.



11. Click the OK button followed by “Yes” to save these values.

12. Repeat steps 1-2 and 7-10 for any additional Vmed wireless remotes that you have paired with this computer.

Last updated: 2020-05-29